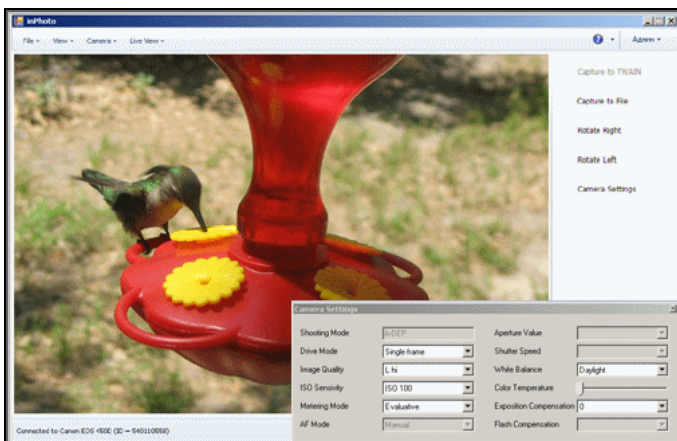


inPhoto Capture SLR

Canon SLR camera control

inPhoto Capture SLR is designed for full control of Canon SLR cameras. **inPhoto Capture SLR** works as TWAIN driver and as stand alone application. It supports all TWAIN compatible software products including all well known ID card solutions (ID Works, CardFive, EPISuite, Asure ID, ID Flow, etc.).



Basic features of inPhoto Capture SLR:

- Ability to work as **TWAIN driver** and as **stand alone** application.
- **Camera settings control** from computer.
- **Live image preview** (not for all Canon SLR cameras!).
- **Image rotation**: manual by 90 and 180 degrees.
- **Save images** to the specified folder.
- **Image export** to the applications supporting TWAIN.

Supported Canon SLR cameras:

Canon EOS 30D, Canon EOS 400D / REBEL XTi, Canon EOS-1D Mark III, Canon EOS 40D, Canon EOS-1Ds Mark III, Canon EOS 450D / DIGITAL REBEL Xsi, Canon EOS 1000D / DIGITAL REBEL XS, Canon EOS 50D, Canon EOS 5D Mark II, Canon EOS 500D/Rebel T1i.

The live image preview is available for **Canon EOS 450D, EOS 1000D, Canon EOS 500D**. For all other cameras the message "Live Preview is not available" will be displayed in the image window.

Possible applications of inPhoto Capture SLR:

- ID photo for ID cards, passes, and badges,
- Using Canon SLR camera on the microscope or copy stand,
- Subject photography: jewel photo, etc.,
- Document and book photography, and other.



email: info@akond.net
http://www.akond.net
Tel: +7-921-7578319,
Tel. / fax: +7-812-6006918