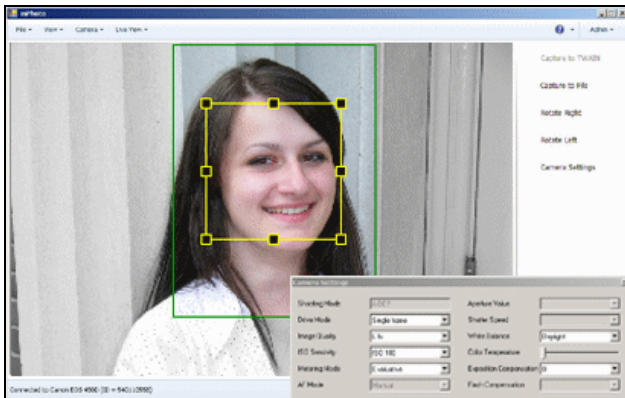
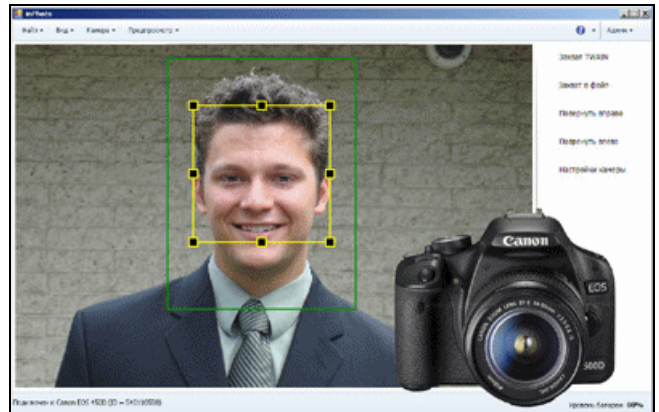


# inPhoto ID SLR

## ID photo software

**inPhoto ID SLR** is designed for automatic ID photography with Canon SLR cameras. **inPhoto ID SLR** works as TWAIN driver and as stand alone application. It supports all TWAIN compatible software products including all standard ID card solutions (ID Works, CardFive, EPISuite, Asure ID, ID Flow, inCard, etc.).



### Basic features of inPhoto ID SLR:

- **Camera settings control** from computer.
- **Live image preview** (not for all Canon SLR cameras!).
- **Image rotation**: manual by 90 and 180 degrees.
- **Automatic face detection** on live image.
- **Automatic face crop**.
- **Image enhancement**.
- **Save images** to the specified folder.
- **Image export** to standard ID card software or to all other applications supporting TWAIN.
- Ability to work as **TWAIN driver** and as **stand alone** application.

### Supported Canon SLR cameras:

Canon EOS 30D, Canon EOS 400D / REBEL XT*i*, Canon EOS-1D Mark III, Canon EOS 40D, Canon EOS-1D*s* Mark III, Canon EOS 450D / DIGITAL REBEL X*s*i, Canon EOS 1000D / DIGITAL REBEL X*S*, Canon EOS 50D, Canon EOS 5D Mark II, Canon EOS 500D/Rebel T1*i*.

The live image preview is available for **Canon EOS 450D, EOS 1000D, Canon EOS 500D**. For all other cameras the message "Live Preview is not available" will be displayed in the image window.

### Possible applications of inPhoto ID SLR:

- ID photo for ID cards, passes, and badges,
- ID photo for databases, etc.



email: [info@akond.net](mailto:info@akond.net)  
<http://www.akond.net>  
Tel: +7-921-7578319,  
Tel. / fax: +7-812-6006918